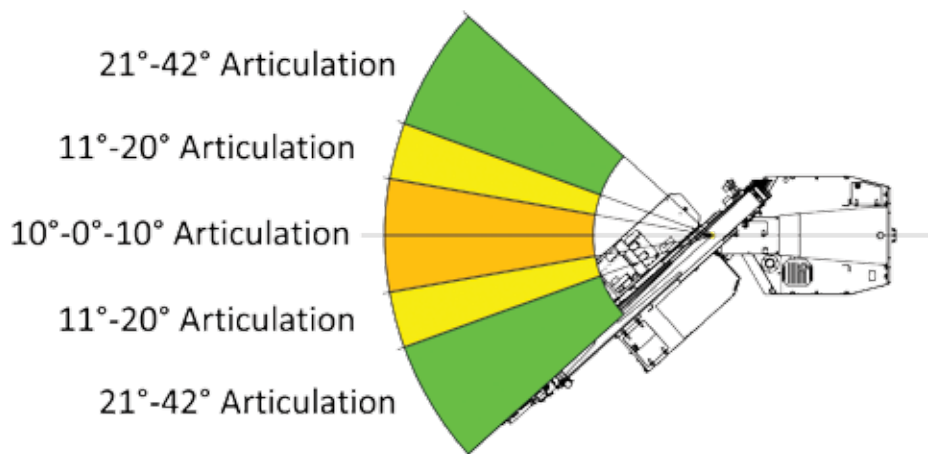
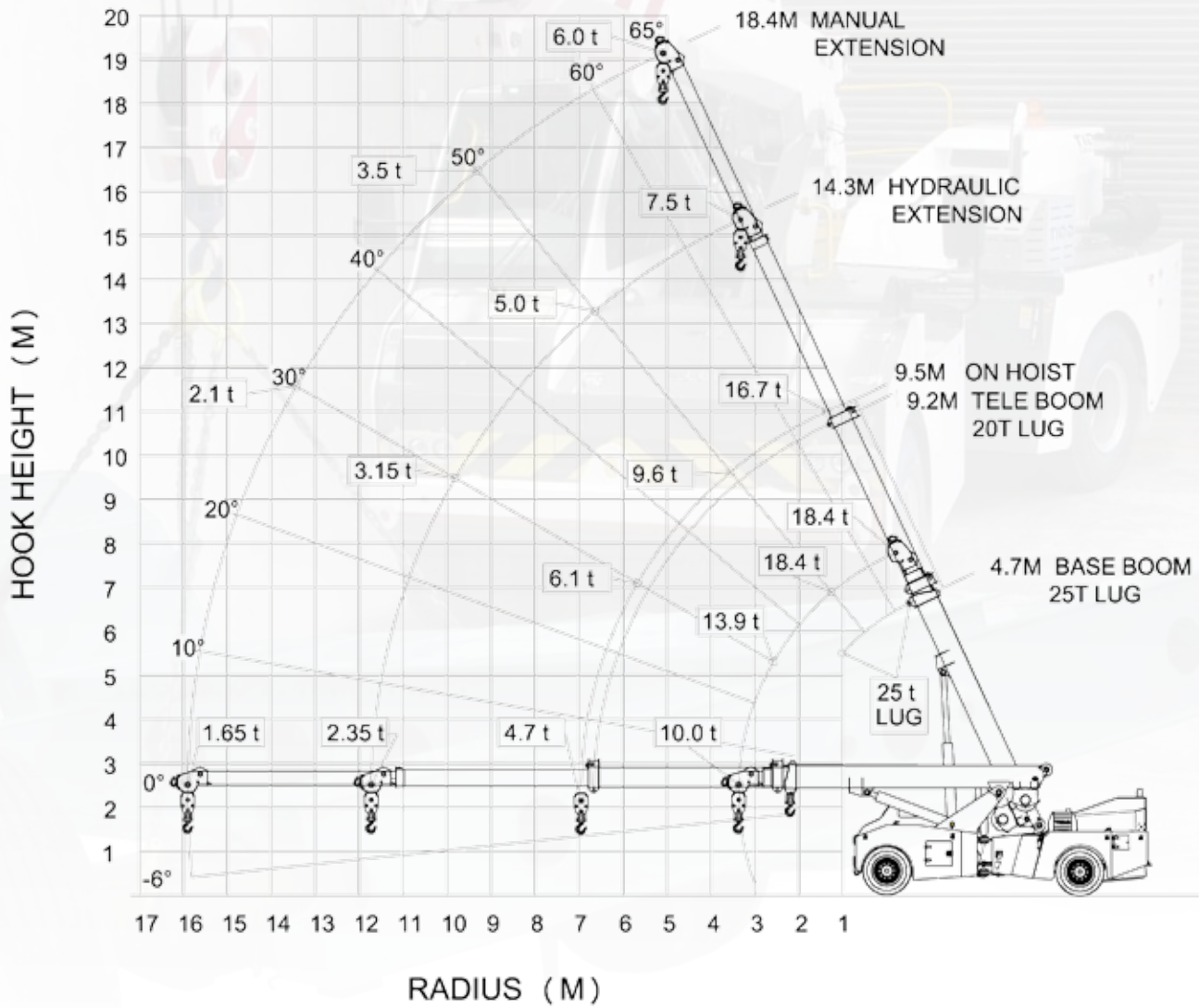


# TIDD CRANE IIII

## PC25 - Range Diagram



# TIDD CRANE

## PC25 - Main Hoist Manual Retracted

## Manual Extended

	5.9	6.5	7.0	7.5	8.0	8.5	9.0	9.5	10.0	10.5	11.0	11.5	12.0	12.5	13.0	13.5	14.3
1.0	18400	18400	18400	18400													
	17480	17480	17480	17480													
	15640	15640	15640	15640													
	53	57	60	62													
1.5	18400	18400	18400	18400	18400	18400											
	17480	17480	17480	17480	17480	17480											
	15640	15640	15640	15640	15640	15640											
	47	51	55	57	60	62											
2.0	17200	17130	17060	16990	16920	16850	16780	16710									
	16340	16274	16207	16141	16074	16008	15941	15875									
	14620	14561	14501	14442	14382	14323	14263	14204									
	40	46	49	53	55	58	60	61									
2.5	13900	13870	13840	13800	13770	13740	13710	13670	13640	13610							
	13205	13177	13148	13110	13082	13053	13025	12987	12958	12930							
	11815	11790	11764	11730	11705	11679	11654	11620	11594	11569							
	32	39	44	48	51	54	56	58	60	61							
3.0	11450	11400	11360	11310	11270	11220	11180	11130	11080	11040	10990	10950	10900				
	10878	10830	10792	10745	10707	10659	10621	10574	10526	10488	10441	10403	10355				
	9733	9690	9656	9614	9580	9537	9503	9461	9418	9384	9342	9308	9265				
	20	31	38	42	46	49	52	54	56	58	60	61	62				
3.5	10000	9940	9880	9820	9760	9700	9640	9580	9520	9460	9400	9340	9280	9220	9160	9100	
	9500	9443	9386	9329	9272	9215	9158	9101	9044	8987	8930	8873	8816	8759	8702	8645	
	8500	8449	8398	8347	8296	8245	8194	8143	8092	8041	7990	7939	7888	7837	7786	7735	
	0	21	30	36	41	45	48	50	53	55	57	58	60	61	62	63	
4.0		8800	8720	8630	8540	8450	8370	8280	8190	8110	8020	7930	7850	7760	7670	7590	7500
		8360	8284	8199	8113	8028	7952	7866	7781	7705	7619	7534	7458	7372	7287	7211	7125
		7480	7412	7336	7259	7183	7115	7038	6962	6894	6817	6741	6673	6596	6520	6452	6375
	0	21	29	35	40	43	46	49	51	53	55	57	58	60	61	63	
4.5			7610	7550	7500	7440	7380	7330	7270	7220	7160	7100	7050	6990	6940	6880	6820
			7230	7173	7125	7068	7011	6964	6907	6859	6802	6745	6698	6641	6593	6536	6479
			6469	6418	6375	6324	6273	6231	6180	6137	6086	6035	5993	5942	5899	5848	5797
	0		20	28	34	38	42	45	48	50	52	54	56	57	59	60	
5.0				6920	6860	6800	6740	6680	6620	6560	6500	6440	6380	6320	6260	6200	6150
				6574	6517	6460	6403	6346	6289	6232	6175	6118	6061	6004	5947	5890	5843
				5882	5831	5780	5729	5678	5627	5576	5525	5474	5423	5372	5321	5270	5228
	0			19	27	33	37	41	44	47	49	51	53	54	56	58	
6.0						5650	5650	5640	5640	5630	5630	5620	5620	5610	5610	5600	5600
						5368	5368	5358	5358	5349	5349	5339	5339	5330	5330	5320	5320
						4803	4803	4794	4794	4786	4786	4777	4777	4769	4769	4760	4760
						0	18	26	31	35	39	42	45	47	49	51	53
7.0							4700	4680	4660	4640	4630	4610	4590	4570	4550	4530	
							4465	4446	4427	4408	4399	4380	4361	4342	4323	4304	
							3995	3978	3961	3944	3936	3919	3902	3885	3868	3851	
							0	17	25	30	34	37	40	43	45	48	
8.0									3980	3970	3970	3960	3960	3950	3950	3940	
									3781	3772	3772	3762	3762	3753	3753	3743	
									3383	3375	3375	3366	3366	3358	3358	3349	
									0	16	23	28	32	36	39	42	
9.0											3410	3400	3400	3390	3390	3390	
											3240	3230	3230	3221	3221	3221	
											2899	2890	2890	2882	2882	2882	
											0	16	22	27	31	36	
10.0													2940	2920	2900	2890	
													2793	2774	2755	2746	
													2499	2482	2465	2457	
													0	15	22	28	
11.0																2650	2590
																2518	2461
																2253	2202
																0	18
11.8																	2350
																	2233
																	1998
																	0

RADIUS FROM FRONT AXLE (M)	BOOM LENGTH 18.45M
5.1	6000
	5700
	5100
	65
6	6000
	5700
	5100
	62
7	4900
	4655
	4165
	59
8	4090
	3886
	3477
	55
9	3510
	3335
	2633
	51
10	3110
	2955
	2644
	47
11	2710
	2575
	2304
	43
12	2390
	2270.5
	38
13	2110
	2005
	1794
	33
14	1930
	1737
	1641
	26
15	1760
	1672
	1496
	18
15.9	1650
	1568
	1403
	0

### Rated Capacity in Kg

	0° - 10° articulation
	11° - 20° articulation
	21° - 42° articulation
	Boom angle in degree